



Prospectus 2025

Purpose @ built for you and your future

In partnership with



Open Events

28 November 2024, 5-7pm

23 January 2025, 5-7pm



Scan to book!



Pudsey
Sixth Form
College

Get to know our courses, tutors and how Pudsey Sixth Form College could be the next step in your education success at an Open Event. You'll also get a chance to meet a like-minded community, find out what support is available to help you access sixth form college, and get a feel of what studying with us will be like. Even better? You can apply for Pudsey Sixth Form College there and then.



Address

Our upcoming Open Events will be held at Pudsey Civic Hall.

Pudsey Civic Hall, Dawson's Corner, Pudsey LS28 5TA

Contents

Open Events	2
Principal's Welcome	4
Who We Are	6
Why Study With Us?	8
Facilities	12
Entry Requirements	14
A Levels	16
Hybrid Programmes	18
Step Up to A Level (SUTA)	19
Vocational Courses	20
Application Process	24
Academic and Pastoral Support	26
Financial Support	27
Student Life	28
Information for Parents and Guardians	36
Contact Information	38



Principal's Welcome

At Pudsey Sixth Form College, we believe that you write your own story. Whether you envision your next chapter involving grand career plans, setting your sights on the best universities, or developing the character and mindset needed for future success and wellbeing, we're here to help you not only achieve - but fully realise the heights you can reach along the way.

We recognise and celebrate that each student is unique, and we see you and your educational journey as a whole. Our new Sixth Form College will be a place where we all believe we can achieve great things; that we realise our ambitions through hard work, dedication, and by valuing everyone in our community as an individual. You'll be encouraged and supported to explore your interests, learn what you love and take the next steps to turn your passion into a future of which you can be proud.

The excitement surrounding our progress is building with every brick. You'll be the first generation of students at our brand-new, purpose-built campus, designed around your needs to bring out the best in creativity, innovation and learning. Your voice will become part of the fabric of our building: it could inspire the next generation to come and will contribute to Pudsey Sixth Form College's very own story.

Place matters to us. We're proud to be in the heart of Pudsey, and our specialist staff will bring local, national and global experience and expertise to your doorstep. We welcome students who focus on success and we take pride in the diversity of our community; our courses expand across different industries, career paths and communities so you can make an impact in the areas you care about the most.

Here at Pudsey Sixth Form College, our commitment to exceptional education means that our offering reflects what's happening in the world today, with employers, experts and industries shaping our curriculum, and a determination to instil academic excellence central to everything we do.

We believe that education enables people to explore, define and rewrite their story. Learn with us and begin your next chapter.

Dr Phil Mark
Principal of Pudsey Sixth Form College

Who We Are



Here at Pudsey Sixth Form College, we are invested in local, innovative education that goes beyond the classroom. We strive to bring out the best in our students by adapting and listening to their individual learning styles, voices and perspectives. Together, we can create a culture of education that you can care about, that paves the way for your future and enables you to exceed your own expectations.

In 2024, we began our exciting building works and will soon bring a brand-new sustainable, innovative and purpose-built sixth form college campus to Pudsey. We take pride in bringing together young people from across the Pudsey area, delivering bold, ambitious curriculums that have no limit to where they're applied.

Whether our students' ambitions are local, national or global, Pudsey remains at the heart of what we do. We work closely with the community and local businesses, opening the door for new opportunities while investing in their strengths.

Our courses are taught by sixth form specialists who bring expertise from workplace environments and the industry to your classroom. We bridge the gap between school, university and employment, so that you can focus on exploring what makes you tick and how you want to make your mark - we'll help you get there through our education.

Our Values

We build independence and resilience	We have a sense of belonging and are proud of our local community
We share a passion for teaching, learning and broadening horizons	We empower students to strive for excellence
We examine the world around us and question how we can improve it	We expect expertise from our tutors and curiosity from our students



Why Study With Us?

At Pudsey Sixth Form College, our learning experience reflects your future. Here, you are equal to tutors and taught practical, industry-relevant knowledge while being encouraged to express yourself freely. Whether you have ambitions of going to university, starting a career, or have yet to decide, our courses provide you with lived experience and room to find your calling so that you can move beyond.



Write your own story

Education that integrates your lived experience,
community and passions

Curriculums that offer choice, experience and
future-ready skills

Inspiring education that's moulded in collaboration with you

We can help you find educational pathways to
achieve your dreams

Achieve more than you could imagine

Write an educational future without constraints

Go beyond a grade

Teaching that broadens your horizons - delivered by academic specialists in Key Stage 5 and beyond

Taster days and enrichment activities that inspire and ignite imagination

Work experience opportunities with industry contacts

Curriculums that bridge the gap between school, university and work

A new and bold curriculum that inspires success

A 'we know you can' culture

Proud to be in Pudsey

A modern, city campus in your neighbourhood

Classrooms designed for the curious

Education in a sustainable learning environment with green facilities

Large enough to give you opportunities, small enough to be seen

Support the local community through your achievements

Building Pudsey, building confidence, building you

We support
students in
understanding
and defining their
story so they
can progress
beyond sixth
form college,
and be proud
of the chapters
they write
along the way



Facilities



We're excited to be building an innovative new campus in the heart of Pudsey.

Pudsey Sixth Form College will be entirely purpose-built, carbon-conscious, and has been designed to perfectly accommodate the unique needs of our curriculums, students and teaching methods. Experience personal growth beyond education, in an environment where you can find your people.

Experience a campus designed with:

Classrooms that balance comfort and light so you can focus on learning

Green facilities with specialist fittings

Modern architecture

Study areas where you can take time to process

Communal lounges and dining

Spaces to connect

This new sixth form college building has not only been meticulously planned and designed around our exceptional education, but will inform and enhance it too.

We look forward to sharing it with you!

Entry Requirements

The general entry requirements for our courses are five GCSEs at grade 9-4, including English and maths (or equivalent). Some subjects may require a grade 5 or above in GCSE English or maths (please refer to the table to check individual course requirements).

If you have below grade 3 in GCSE English or maths, we can still consider your application - depending on your chosen courses. In addition to your chosen programme, you'll also study GCSE English or maths - equipping you with a key skill that will benefit your future education or work.

We're currently building our range of courses for you to choose from at Pudsey Sixth Form College. While the selection is subject to change, our current offering has been carefully curated to inspire, prepare for and achieve success.



Stay up-to-date with our course offering at [pudseysixthformcollege.ac.uk](https://www.pudseysixthformcollege.ac.uk)

A Level Courses	Entry requirements
Art & Design	9-4 in GCSE Art or any art-based subject, plus a portfolio
Biology	9-5 in GCSE Biology or 5-5 in GCSE Combined Science, and 9-5 in GCSE Maths
Business	9-5 in GCSE Maths
Chemistry	9-5 in GCSE Chemistry or 5-5 in GCSE Combined Science, and 9-5 in GCSE Maths
Core Maths	9-4 in GCSE Maths
English Language	General entry requirements
English Literature	9-5 in GCSE English
EPQ	General entry requirements
Film Studies	General entry requirements
Geography	9-5 in GCSE English or GCSE Geography
History	9-5 in GCSE English or GCSE History and 9-5 in an essay subject (GCSE English, GCSE History or GCSE RS)
Law	9-5 in an essay subject (GCSE English, GCSE History or GCSE RS)
Maths	9-6 in GCSE Maths
Media Studies	General entry requirements
Philosophy	9-5 in GCSE English
Physics	9-6 in GCSE Maths and 9-5 in GCSE Physics or grade 9-5 in GCSE Combined Science. Students should also study A Level Maths.
Politics	9-5 in GCSE English or GCSE History and 9-5 in an essay subject (GCSE English, GCSE History or GCSE RS)
Psychology	9-5 in GCSE Maths, GCSE Science (two separate subjects or a minimum 5-5 in GCSE Combined Science) and an essay subject (GCSE English, GCSE History or GCSE RS)
Religious Studies	9-5 in an essay subject (GCSE English, GCSE History or GCSE RS)
Sociology	9-5 in an essay subject (GCSE English, GCSE History or GCSE RS)
GCSEs	GCSEs are available through our SUTA programme. See page 18 for more details

We're currently building our range of courses for you to choose from at Pudsey Sixth Form College. While the selection is subject to change, our current offering has been carefully curated to inspire, prepare for and achieve success.



A Levels

Art & Design

Explore the fundamentals of art, craft and design. At the end of first year, you will specialise in your chosen field of Photography, Fine Art, Graphics, Textiles or 3D.

Biology

Understand and explore key biological systems including the components of cells, the molecules which make up living organisms and the reactions between them.

Business

Understand how businesses start, expand and succeed by adapting to an ever-changing world.

Chemistry

Develop a greater understanding of the principals of Chemistry and understand how molecules interact with each other and the properties of the materials that constitute the Universe

Core Maths

Retain and develop your knowledge and skills from GCSE, as well as study and apply new Level 3 material. A one year course.

English Language

Study language ranges, cover thought-provoking topics and analyse different texts, including conversations facilitated and generated by modern technology.

English Literature

Understand how to analyse complex literary issues with the help of important critical ideas and theories.

Extended Project Qualification (EPQ)	An independent research project which involves writing an essay of 5000 words, or creating a product - which might be anything from an art object to an iPhone app.
Film Studies	Learn critical perspectives across cinematography, screenplay, direction and more. See familiar and new genres through a new lens.
Geography	The study of Earth's landscapes, people, places and environments. Explore physical and human geographical issues such as globalisation, inequality and climate change.
History	Explore pivotal economic, political and social moments in British and European history over the last 200 years. Understand what led us to today and build arguments around the interpretations of our past.
Law	Gain insight into our legal system and how it affects citizens. Understand where our laws come from and how legal cases reach a verdict.
Maths	Develop your mathematical tools and techniques, including algebra, geometry, trigonometry and calculus - forming the fundamental building blocks of the subject.
Media Studies	Explore the different ways that media acts as a form of entertainment and also a means of worldwide communication and representation. Analyse a variety of texts and demonstrate your understanding through a creative project.
Philosophy	Study four major areas of philosophical thought, including epistemology (theory of knowledge) and moral philosophy (applying real-life scenarios to key ethical philosophy theories).
Physics	A subject that seeks to explain how the world works. Develop skills in physics, maths, technical writing, observation, measuring instruments, research and independent work.
Politics	Debate on political and social issues, current affairs and how decisions affecting society are made. Gain an understanding of how democracy works in the UK and analyse the views of different political parties, individuals and groups.
Psychology	Learn psychological approaches, theories, concepts, methods and science. Explore key societal questions, case studies, relevant issues and debates.
Religious Studies	Explore and debate a wide range of key topics, including the nature of God/gods, life after death, challenges posed by science, and the nature and role of religion.
Sociology	The study of individual and institutional relationships within society. Develop your understanding of society by examining cultural relationships, social interactions and research.
GCSEs	GCSE areas include English, creative, humanities, maths and science.

Hybrid Programme

Our innovative Hybrid Programme combines two A Levels with one vocational course. Providing specialist curriculum content and knowledge, our effective vocational diplomas slot together with A Levels and enable you to seamlessly progress to Higher Education courses.

They're an ideal option if you already have a career path in mind.

To find out what vocational course could fit your Hybrid Programme, stay updated by visiting us online or in-person at our Open Events.

Two A Levels



one vocational course



Hybrid Programme

Step up to A Levels (SUTA)

We believe that sixth form education should be accessible to everyone.

That's why you can still study with us, even if you don't meet the entry requirements for our A Level provision.

Our Step Up to A Levels (SUTA) programme means studying five GCSEs over one year. You'll be based on campus as part of the Pudsey Sixth Form College community, and once you have completed the programme, you can continue your higher education story by progressing to A Levels.

SUTA offers different and varied pathways to support your future. In addition to your chosen three subjects, you must include GCSE English Language and GCSE Maths, subjects that will support your future, whatever your goals.

Additional subjects could include:

Literature
Creative

Humanities
Science

If you are interested in the Hybrid Programme, you can choose a vocational course from one of the following options:



Vocational

BTEC National Extended Certificate in Applied Law

If you have an interest in law, our court system or want to work within the legal sector, this enjoyable but challenging course is for you. Learn how the English legal system works, how laws are made and explore the structure of the court system.

BTEC National Extended Certificate in Applied Psychology

Psychology is a fascinating subject exploring the study of the human mind and behaviour. This enjoyable course is the equivalent to one A Level and provides a broad basis of study in the applied psychology sector such as health psychology and clinical psychology.

BTEC National Extended Certificate in Applied Science

Study biology, chemistry and physics in our practical state-of-the-art laboratories. You'll explore specific areas of science such as diseases, physiology, genetics, and astronomy, develop practical and experimental techniques, and build up your analytical and research abilities.

BTEC National Extended Certificate in Sport and Fitness

This course equips you with practical and theoretical sports knowledge, and covers important topics such as physical fitness, exercise and competitive performance. You will also achieve an industry-recognised REPs Gym Instructing qualification, and complete 30 hours of work placement.



We firmly
believe there
is no limit to
where you
can go and
what you
can achieve



Application Process

1

Get to know us

Join us at an Open Event at Pudsey Civic Hall, browse our website, email or call us to learn about our courses and community.

28 November 2024, 5-7pm | 23 January 2025, 5-7pm

2

Apply

Apply by completing our online application via the Pudsey Sixth Form College website pudseysixthformcollege.ac.uk

3

Interview

Once your application has been reviewed, you will be invited to an informal interview which will include specialist advice and guidance, ensuring you get the best opportunity to succeed.

4

Offers

Offers are made following an interview and are conditional, based on you achieving the relevant GCSEs, or requirements agreed at interview.

5

Bridging day

You will be invited to a 'bridging day' where you will meet staff, experience some A Level lessons and view our facilities.

6

Enrolment

An invitation to book an enrolment slot will be sent out in mid-July, giving you all the information you need to enrol.

We'll be visiting Co-op Academy Priesthorpe, Crawshaw Academy and Leeds West Academy this school year - we can tell you more and answer your questions!

Academic and Pastoral Support



At Pudsey Sixth Form College, you will be provided with plenty of support to help you maximise your potential. Time is allocated in your study groups for peer study groups and 1:1 coaching sessions with a tutor, where you can share ideas and receive support with your studies.

Student Wellbeing

If you are experiencing personal difficulties that may affect your studies, you can access specialised 1:1 support from our dedicated pastoral team.

We provide drop-in help to support with studying, revision and exam preparation - ensuring you are fully equipped to proceed.

You can also engage with an array of enrichment activities to build friendships, pursue personal interests and contribute to the student body.

Financial Support

We offer a range of support with course-related costs such as:

- free breakfasts
- free lunches
- travel passes
- childcare

Please note: funds are limited and allocated on a case-by-case basis. More information, including eligibility criteria, can be found on our financial support page on our website*.

*Our website is currently in development and is regularly updated with new information. Our full support and provisions will be available by February 2025.



Student Life



Safeguarding, Wellbeing, Health and Behaviour, and Care Experience

The safety and wellbeing of our students and staff is a top priority. All staff are trained in safeguarding and child protection and our dedicated Safeguarding team is on hand for advice and support.



Wellbeing

At Pudsey Sixth Form College, supporting wellbeing and promoting good mental health for all our students and staff is paramount. It's always good to talk and we have dedicated mental health trained coaches who can direct you to services that can help. We offer services ranging from sharing mindfulness techniques to short-term counselling.

Health and Behaviour

Here at Pudsey Sixth Form College, we promote positive relationships and all staff are trained in Restorative Practice. As well as championing positive behaviour, we provide information and support relating to health. From running health campaigns such as Stoptober to awareness campaigns such as World AIDS Day and National Vegetarian Week, we aim to promote healthy lifestyles and relationships.

Our food and catering services produce a wide range of delicious and nutritious food, and we run a number of events throughout the year. Our events give students practical advice as well as the opportunity to sample dishes, learn new recipes and enjoy food from different cultures.

Care Experience

We offer support for all Children Looked After and Care Leavers to ensure a smooth transition to college life. We have a designated staff member in every curriculum department to support care-experienced students. Financial support may also be available for eligible students, please visit our website for more details.

Equality, Diversity & Inclusion (EDI)

All our staff complete EDI training which helps to foster an inclusive and innovative environment. We also have an EDI team who work across the group to create a culture of mutual respect where everyone feels welcome and valued. Our network of EDI champions represent each department and partake in numerous activities to promote equality, diversity and inclusion.





**A sixth
form where
you can
write your
own story**

Engagement



Enrichment

Recognising that there is more to sixth form education than a piece of paper, we run an extensive range of enrichment activities. These activities are a great way to make new friends and have fun. Enrichment will not only help build your confidence and enhance your learning experience, they are also a positive addition to university and job applications.

Student Union and Student Voice

Leeds City College's Students' Union (LCCSU) works in partnership with Pudsey Sixth Form College and is an independent organisation that makes your student experience more enjoyable.

From fun events to the promotion of student-led activity, our aim is to ensure you are engaged, represented and supported throughout your time at Pudsey Sixth Form College.

Student Voice

It's important for students to have their say and our Students' Union officers act as representatives for different groups. There are opportunities for you to become a student leader, have your say and work with the College to continually develop Pudsey Sixth Form College now, and for future students.

Tutorial and Personal, Health, Social and Citizenship Education (PHSCE)

Tutorials and PHSCE lessons give you the opportunity to explore and discuss topics beyond your chosen courses. From developing a greater understanding of the world around us and preparing for life in modern Britain to discussing health and wellbeing, equality, diversity and inclusion and citizenship, we explore a wide range of subjects. Focus is also given to your personal development in 1:1 tutorials.

Student Funds and Welfare

The Welfare team supports students through crises, giving advice on benefit problems, debt, housing and homelessness, loss of work, and not having enough money for food and bills.

We don't want financial concerns to hold students back

- as a college we work hard:

- Supporting students to overcome financial barriers to attending college*
- Providing a range of support including meals, travel passes and help with childcare*

In addition to the above, support may be available for students aged 16-18 who live alone or are in care or are a care leaver.

**Eligibility criteria apply*

- please visit our website for full details





Pride in your
past, pride in
your future

Careers, Work Experience and Progression

Careers Advisors play a key role in helping you think about what you will do once you complete your education with us. Advice covers a range of subjects from jobs and apprenticeships to university.

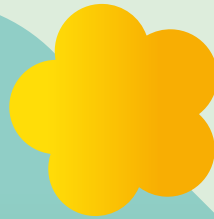
All students will have the opportunity to attend Higher Education fairs, employer talks and careers fairs held on campus.

Work experience is an important part of your studies and all students will undertake some form of work experience, including placements, employer-led projects, work tasters and social action projects. This practical experience can boost your UCAS application and equip you with the working knowledge necessary for higher education or employment.



Information for Parents and Guardians

Once your child starts their journey at Pudsey Sixth Form College, you will be invited to regular parent meetings and stay connected with regular updates.



1:1 coaching for every student

Every student will be assigned a coach who will support them during their education journey - monitoring their progress, development and meeting them for a weekly tutorial. You will be able to contact your child's coach at any time throughout the year to arrange a meeting, should you have any queries or concerns.

Parental reports and correspondence

You will be able to access our online portal via our website at any time of the year. Here, you can find information regarding their attendance, progress and assessment grades for each subject. If your child is below 18 years of age, we will send you a full written progress report covering each of their subjects, with feedback from each tutor.

Parents' evenings and events

Parents' Welcome Evening

Familiarise yourself with our learning experience and the Pudsey Sixth Form College environment. You will also meet your child's coach.

Parents' Evenings

Taking place at key stages in the academic year.
Discuss your child's progress with their subject teachers.

Parents' Progression Evening

Learn what opportunities are available to your child once they've completed their course. Speak with experts who can offer advice on their next steps.

We value our relationships with parents and guardians, and recognise your important role in supporting our students throughout their education.

Contact Information

For more information about our courses, student support or our sixth form college facilities or provisions, you can visit our website **[pudseysixthformcollege.ac.uk](https://www.pudseysixthformcollege.ac.uk)***

You can also speak to one of our friendly team members who will be more than happy to answer any questions.

Email courses@pudseysixthformcollege.ac.uk

Call 0113 386 1860



*As our new campus develops, so does our website.

We will regularly update our website but we suggest visiting it again in February 2025 for more details.



Disclaimer: The information in this guide is accurate at the time of printing, but some changes may take place. Some variation may occur as a result of circumstances beyond our control. Please see our website pudseysixthformcollege.ac.uk, for the most up-to-date information regarding our courses and student support.

Design by Luminare Education Group
2024

Pudsey Sixth Form College is a member of Luminare Education Group

Open Events

28 November 2024, 5-7pm

23 January 2025, 5-7pm

Our Open Events will take place at Pudsey Civic Hall

pudseysixthformcollege.ac.uk



Scan to book!



In association with



Academies Trust

luminate
EDUCATION GROUP



WHITE ROSE
ACADEMIES